



# GMT MONTHLY MEMBERSHIP PROGRESS REPORT

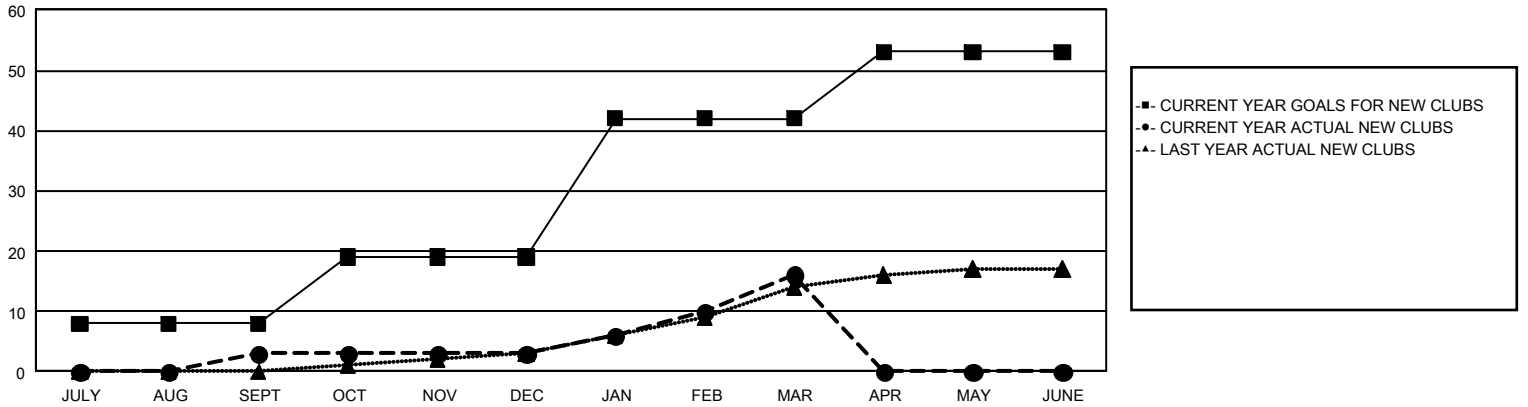
## GAT Constitutional Area 5 - Japan

Results as of: 3/31/2024

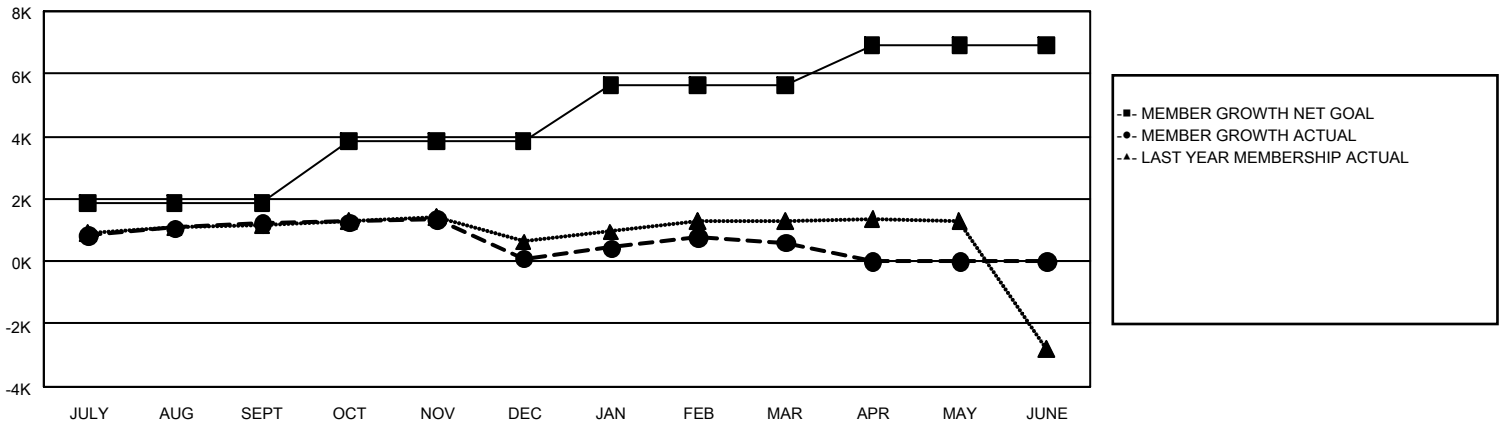
REPORT DOES NOT INCLUDE CLUBS IN UNDISTRICTED AREAS.

Clubs				Members			
RESULTS FOR 2023-2024				RESULTS FOR 2023-2024			
QUARTER	NEW CLUB GOAL	NEW CLUBS	DROPPED CLUBS	QUARTER	MEMBER GROWTH NET GOAL	MEMBER GROWTH ACTUAL	DROPPED MEMBERS ACTUAL (including transfers)
JULY/AUG/SEPT	8	3	3	JULY/AUG/SEPT	1,850	2,926	1,552
OCT/NOV/DEC	11	0	9	OCT/NOV/DEC	1,994	1,269	2,333
JAN/FEB/MAR	23	13	2	JAN/FEB/MAR	1,787	2,211	1,609
APR/MAY/JUNE	11	0	0	APR/MAY/JUNE	1,271	0	0

**GOALS AND ACTUAL NEW CLUBS CUMULATIVE**



**GOALS AND ACTUAL MEMBERS CUMULATIVE**



<b>DROPPED CLUBS: 14</b>	1,866 CLUBS OF 2,774 ADDED 1 OR MORE NEW MEMBERS	<b><u>GENDER DISTRIBUTION</u></b> MALE                    74,609 (76.83%) FEMALE                 22,492 (23.16%)
<b><u>DROPPED MEMBERS</u></b> DECEASED                    619 CLUB CANCELLED                4 OTHER                            4,871 <hr/> TOTAL                            5,494	<a href="#">CLICK HERE FOR CUMULATIVE MEMBERSHIP DATA</a>	TOTAL FAMILY UNIT MEMBERS                    30,219  FAMILY MEMBERS PAYING HALF DUES                    16,703